

Refraction Made Portable

Handheld Autorefractometer for
Objective Refraction Measurements

Empowering Eye Care
Professionals with Clinical
Efficiency and Mobility

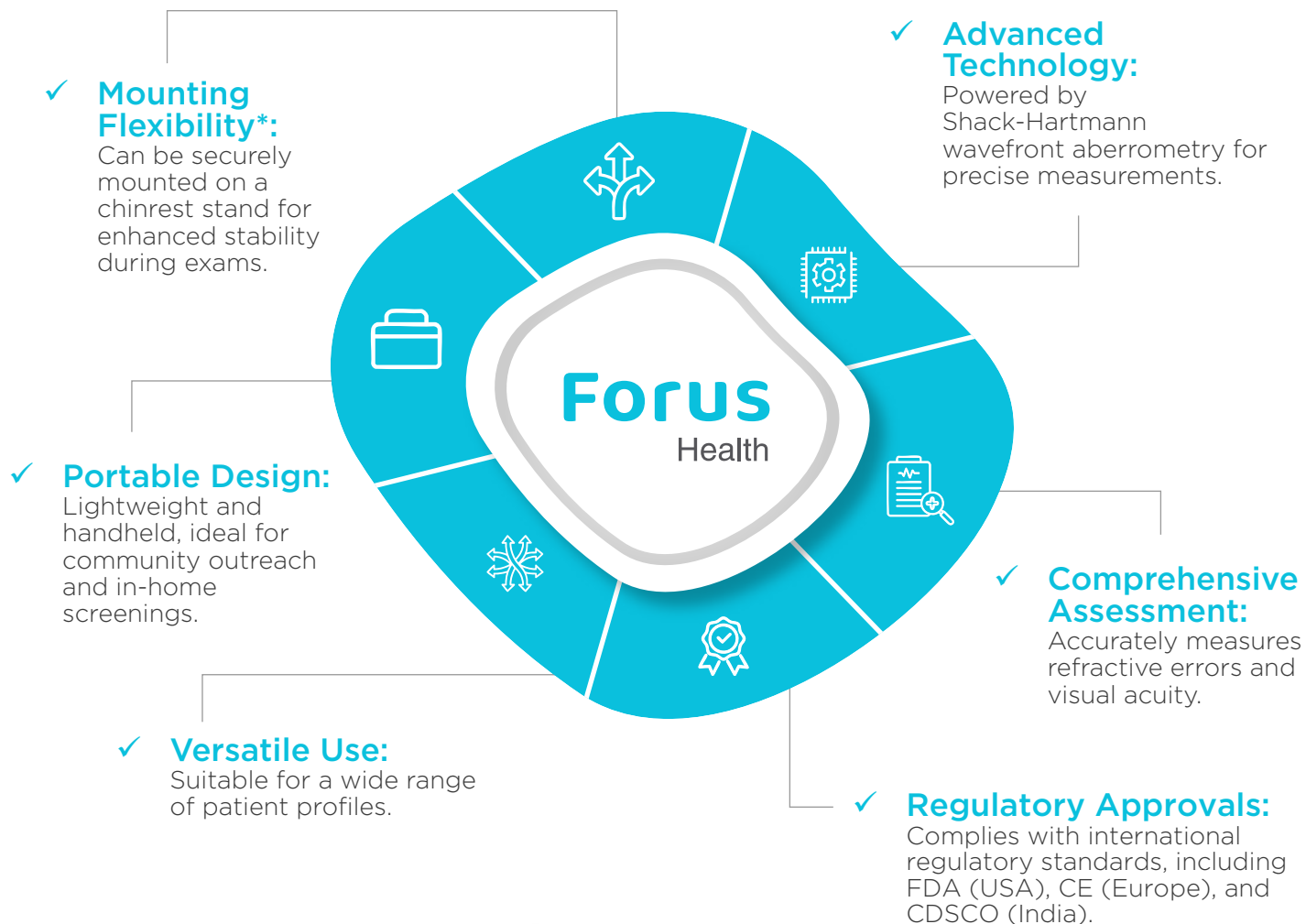
**3nethra
aberro**



3nethra aberro

The 3nethra aberro is a compact, handheld autorefractometer that uses advanced Shack-Hartmann wavefront aberrometry to deliver accurate measurements of refractive error and visual acuity.

Key Features



*Available as an add-on

Advantages



Lightweight and
battery-powered

Supports accurate
refraction in infants
and supine patients



Fast printing of prescriptions
and reports via Bluetooth
printer and QR scanner

Intuitive touchscreen
interface for fast,
efficient



Integrated with
FH TeleCare*

Shorter examination
time for improved
clinical efficiency



*Available as an add-on

Technical Specifications

| Feature | Specification |
|-------------------------------|---|
| Spherical Measurement Range | -14D to + 14D (0.25D increments) |
| Cylindrical Measurement Range | -7D to + 7D* |
| Axis Measurement Range | 0° to 180° (1° increment) |
| Minimum Pupil Diameter | 2.5 mm |
| Vertex Distance | 19.5 mm |
| Patient Age Range | 5 years and above |
| Internal Fixation | Yes |
| Measurement Time | <5 seconds per eye |
| Display & Connectivity | 3.5" color touchscreen, USB, Bluetooth |
| Internal Storage Memory | 400 measurements |
| Technology | Shack-Hartmann Wavefront sensing |
| Battery Life | Up to 8 hours with normal usage |
| Battery Pack | 3.6V, 6800 mAh lithium-ion battery |
| Power Source | AC 100-240V, 50/60 Hz |
| Weight / Dimensions | 650 g/8.9" x 7.2" x 2.9" |
| Working Environment Light | Ambient light |
| Additional Feature | Telemedicine compatible** |
| Optional Accessories | Stand |
| Standard Accessories | Protective Suitcase, Device Charger, Bluetooth Printer with Charger |



*Results displayed in negative convention
**Available as an add-on